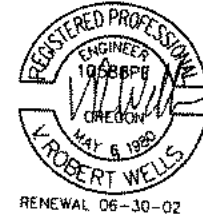


1000 GALLON DOSING SEPTIC TANK



TANK CAPACITY	
RESERVE CAPACITY	180 GAL
LIQUID CAPACITY	1072 GAL
TOTAL VOLUME	1252 GAL
TANK:	21.2 GAL/PER INCH

GENERAL NOTES:

1. THE SEPTIC TANK AS SHOWN COMPLIES WITH THE REQUIREMENTS OF THE STATE OF OREGON, DEPARTMENT OF ENVIRONMENTAL QUALITY, "ON-SITE SEWAGE DISPOSAL RULES" DATED APRIL 1, 1995.
2. INLET AND OUTLET SEAL FOR EXTERIOR PIPING SHALL BE 4" 5V4 NEOPRENE COLLAR CAST INTO CONCRETE CONFORMING TO ASTM C-564. BY TYLER.
3. CONCRETE SHALL ATTAIN A MINIMUM 7- DAY COMPRESSIVE STRENGTH OF 3000 P.S.I. AND A 28- DAY COMPRESSIVE STRENGTH OF 5000 P.S.I. MINIMUM CEMENT CONTENT SHALL BE 7 SACKS PER CU. YD. MAXIMUM SLUMP 3 INCHES.
4. REINFORCING BARS SHALL CONFORM TO ASTM A615 GRADE 40 ($f_y = 40,000$ P.S.I.). WELDED WIRE FABRIC (W.W.M.) SHALL BE ASTM A185.
5. WALL REINFORCING SHALL BE AS NOTED ON PLANS. TOP AND BOTTOM REINFORCING SHALL BE AS INDICATED ON THE DRAWINGS. ADDITIONAL REINFORCING TO BE PROVIDED FOR TEMPERATURE/ SHRINKAGE CRACKING AND IMPACT/ HANDLING LOADS BY ADDING 1.8 LB. PER CU. YD. OF "FORTA FIBRE" SYNTHETIC FIBER REINFORCING.
6. TANKS SHALL BE EQUIPED WITH WATER TIGHT RISERS TO BRING ACCESS TO OR ABOVE FINISHED GRADE. 6" RISER INCREMENTS FROM 12" MINIMUM TO 36" MAXIMUM.
7. GROUT SOLID ALL UNUSED KNOCKOUTS AND SEAL ALL TANK PENETRATIONS WITH CONSPEC ALL-PATCH CONCRETE PATCHING MORTAR BY CONSPEC MANUFACTURING INC.
8. SEAL RISERS TO TANK TOP, RISER CAPS TO RISERS AND TANK SECTIONS AT FIELD JOINTS WITH 3/4" x 3/4" CONTINUOUS BUTYL CAULK. CON-SEAL CS101 OR EQUAL.
9. TEST TANKS FOR WATER TIGHTNESS. AFTER TANKS ARE INSTALLED PLUG ALL INLETS AND OUTLETS AND TEST TANKS BY FILLING EACH TANK TO A MINIMUM OF TWO (2) INCHES ABOVE THE POINT OF THE RISER CONNECTION TO THE TANK. THERE SHALL BE NO MORE THAN ONE (1) GALLON OF LEAKAGE IN A 24 HOUR PERIOD.
10. IN AREAS OF HIGH GROUND WATER THAT WILL CAUSE HYDROSTATIC UPLIFT OF THE TANK CONSTRUCT HYDROSTATIC UPLIFT HOLD DOWN AROUND TANK. SEE DETAIL.

1000 GAL
DOSING SEPTIC TANK
COVER SHEET

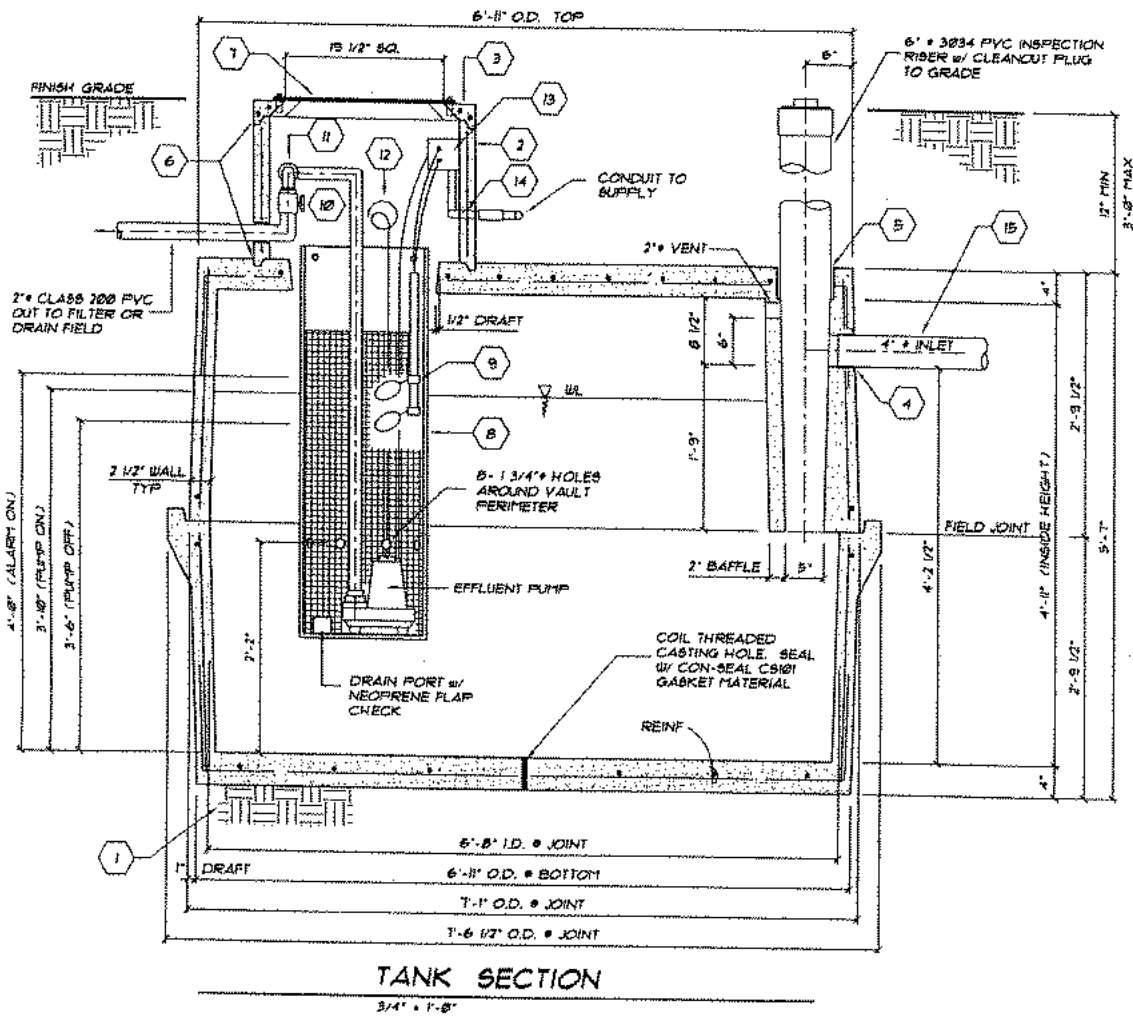
MICHAELS'
PRECAST CONCRETE
BORING, OREGON

35175 S.E. HWY 211
(503) 688-4073

RECEIVED
JAN 04 2002
Water Quality Division
Dept. of Environmental Quality

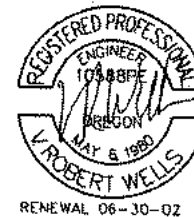
DATE	11/01/01
PROJECT	DI-235
DRAWN	RW
CHECKED	
SHEET NUMBER	1

RECEIVED JAN 28 2002



TANK SECTION

3/4" = 1'-0"



1000 GAL
DOSING SEPTIC TANK
SECTIONS

MICHAELS' PRECAST CONCRETE
BORING, OREGON
35175 S.E. HWY 211
(503) 888-4073

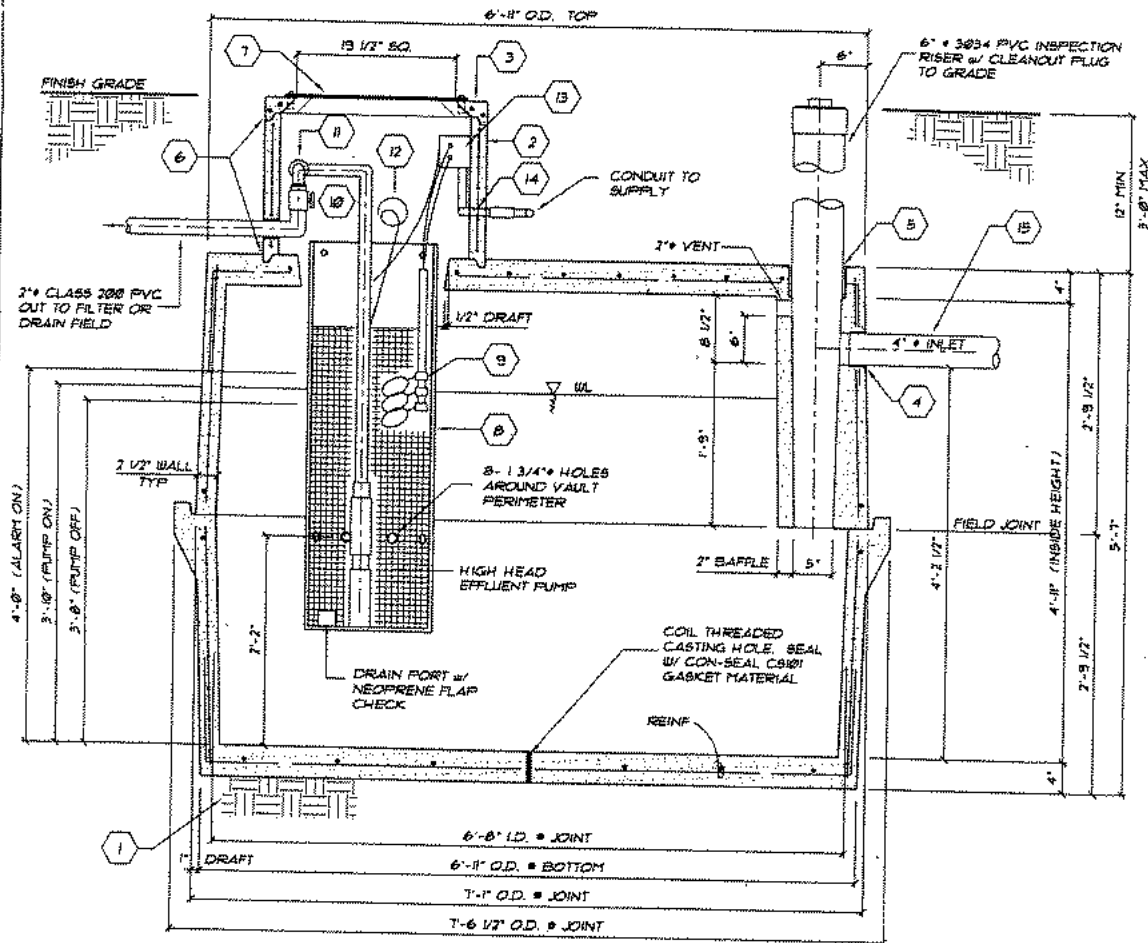
- 1 TANK TO BE PLACED ON LEVEL NATIVE MATERIAL WITH NO PROTRUDING ROCKS. OPTIONAL 2" SAND LEVELING COURSE OR 4" OF 3/4" - 3 COMPACTED ROCK LEVELING COURSE.
- 2 REINFORCED CONCRETE RISER AND LID CAP. 6" RISER INCREMENTS FROM 12" MIN TO 36" MAX.
- 3 1/4" STEEL LID WITH METAL PRIMER. SEE DETAIL. ATTACH TO CONCRETE RISER CAP WITH 4 - 1/4" x 5.8 BOLTS IN THREADED PLASTIC CONCRETE INSERTS BY CONNECTING SYSTEMS, INC.
- 4 4" TYLER 8V4 NEOPRENE (ASTM C-564) COLLAR CAST INTO CONCRETE.
- 5 6" TYLER 8V6 NEOPRENE (ASTM C-564) COLLAR CAST INTO CONCRETE.
- 6 SEAL RISER TO TANK AND RISER CAP TO RISER WITH 3/4" x 3/4" CONTINUOUS BUTYL CAULK AROUND EACH. CON-SEAL C9101 OR EQUAL.
- 7 LID SEAL. 5/16" THICK SPONGE WEATHERSTRIP WITH ADHESIVE BY AUVECO. WEATHERSTRIP SHEET TO COVER COMPLETE UNDERSIDE OF STEEL LID.
- 8 DRENCO SCREENED PVC VAULT 8V1548 WITH POLYETHYLENE SCREEN BY DRENCO SYSTEMS, INC. OR APPROVED ALTERNATE.
- 9 LEVEL CONTROL FLOAT ASSEMBLY.
- 10 2" GATE VALVE.
- 11 2" PVC UNION.
- 12 NYLON ROPE FOR PUMP REMOVAL.
- 13 WATERTIGHT ELECTRICAL CONNECTION BOX.
- 14 SEAL ELECTRICAL CONDUIT AND PRESSURE PIPE PENETRATIONS TO RISER WITH CONSPEC ALL-PATCH CONCRETE PATCHING MORTAR BY CONSPEC MANUFACTURING INC.
- 15 USE 4" PVC SCHEDULE 40 INLET PIPE WITHIN TANK EXCAVATION LIMITS.

RECALL
JAN 04 2002

Water Quality Division
Dept. of Environmental Quality

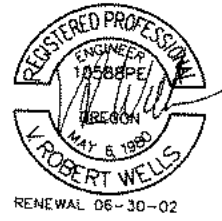
REV	11/01/01
PROJECT	01-235
DRAWN	RW
CHECKED	

WEST NUMBER
2



TANK SECTION (FOR SAND FILTER)

3/4" x 1'-0"



**1000 GAL
DOSING SEPTIC TANK
SECTIONS**

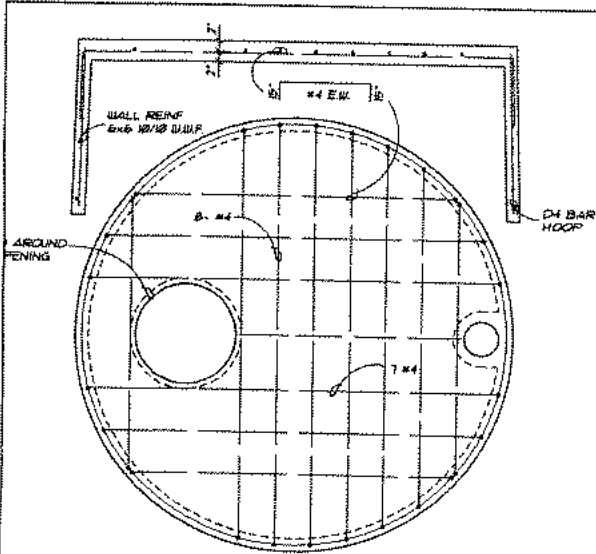
MICHAELS'
PRECAST CONCRETE
BORING, OREGON

35175 S.E. HWY 211
(503) 868-4073

- 1 TANK TO BE PLACED ON LEVEL NATIVE MATERIAL WITH NO PROTRUDING ROCKS. OPTIONAL 2" SAND LEVELING COURSE OR 4" OF 3/4"-2" COMPACTED ROCK LEVELING COURSE.
- 2 REINFORCED CONCRETE RISER AND LID CAP. 6" RISER INCREMENTS FROM 12" MIN TO 36" MAX.
- 3 1/4" STEEL LID WITH METAL PRIMER. SEE DETAIL. ATTACH TO CONCRETE RISER CAP WITH 4-1/4" x 5.5. BOLTS IN THREADED PLASTIC CONCRETE INSERTS BY CONNECTING SYSTEMS, INC.
- 4 4" TYLER SV4 NEOPRENE (ASTM C-564) COLLAR CAST INTO CONCRETE.
- 5 6" TYLER SV6 NEOPRENE (ASTM C-564) COLLAR CAST INTO CONCRETE.
- 6 SEAL RISER TO TANK AND RISER CAP TO RISER WITH 3/4" x 3/4" CONTINUOUS BUTYL CAULK AROUND EACH. CON-SEAL CS101 OR EQUAL.
- 7 LID SEAL. 5/16" THICK SPONGE WEATHERSTRIP WITH ADHESIVE BY AUVECO. WEATHERSTRIP SHEET TO COVER COMPLETE UNDERSIDE OF STEEL LID.
- 8 ORENCO SCREENED PVC VAULT SV1548 WITH POLYETHYLENE SCREEN BY ORENCO SYSTEMS, INC. OR APPROVED ALTERNATE.
- 9 LEVEL CONTROL FLOAT ASSEMBLY.
- 10 2" GATE VALVE.
- 11 2" PVC UNION.
- 12 NYLON ROPE FOR PUMP REMOVAL.
- 13 WATERTIGHT ELECTRICAL CONNECTION BOX.
- 14 SEAL ELECTRICAL CONDUIT AND PRESSURE PIPE PENETRATIONS TO RISER WITH CONSPEC ALL-PATCH CONCRETE PATCHING MORTAR BY CONSPEC MANUFACTURING INC.
- 15 USE 4" PVC SCHEDULE 40 INLET PIPE WITHIN TANK EXCAVATION LIMITS.

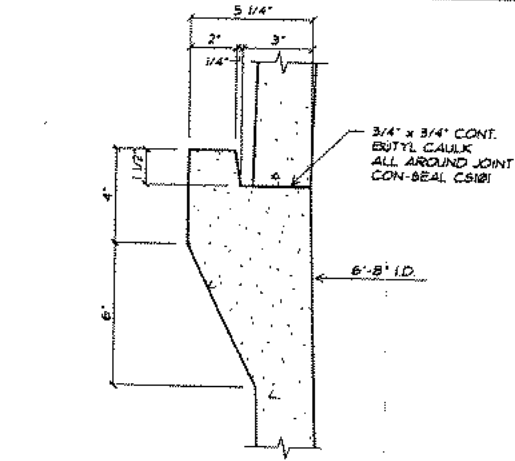
RECEIVED
JAN 04 2008
Water Quality Division
Dept. of Environmental Quality
Water Quality Division
Dept. of Environmental Quality

DATE	11/01/01
PROJECT	01-235
DRAWN	RW
CHECKED	
SHEET NUMBER	2A



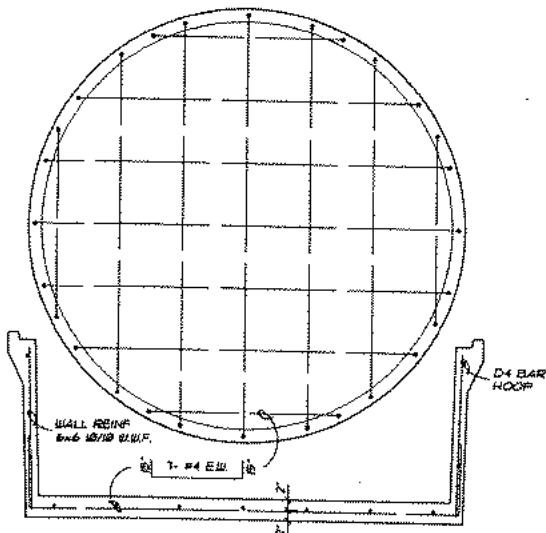
COVER REINFORCING

NTS



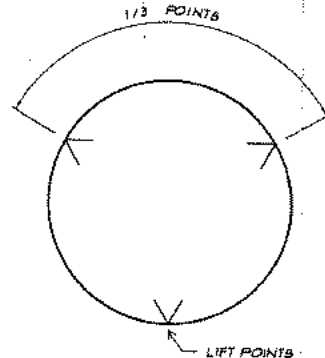
FIELD JOINT DETAIL

NTS

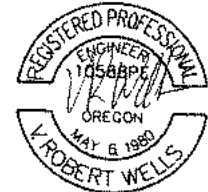


BOTTOM REINFORCING

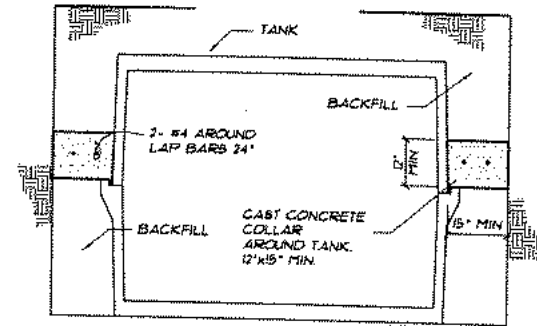
NTS



TANK LIFT POINTS



RENEWAL 06-30-02



IN AREAS WHERE HIGH GROUND WATER OCCURS CONSTRUCT CONCRETE HOLD DOWN COLLAR AROUND TANK.

HYDROSTATIC UPLIFT HOLD DOWN

NTS

**1000 GAL
DOSING SEPTIC TANK
DETAILS**

MICHAELS' PRECAST CONCRETE

35175 S.E. HWY 211
(503) 858-4073

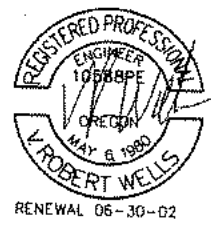
BORING, OREGON

RECEIVED
JAN 04 2002

Water Quality Division
Dept. of Environmental Quality

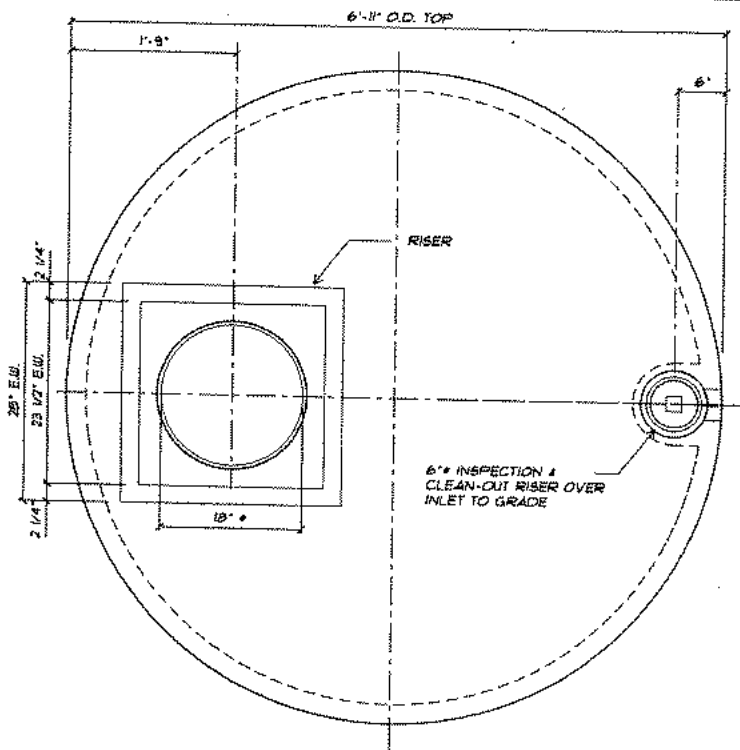
DATE	11/01/01
PROJECT	01-235
DRAWN	RW
CHECKED	
SHEET NUMBER	

4

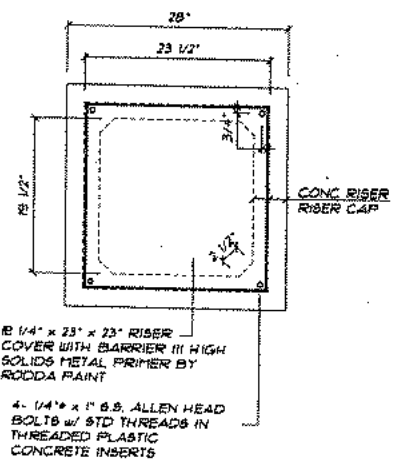


**1000 GAL
DOSING SEPTIC TANK
COVER PLAN**

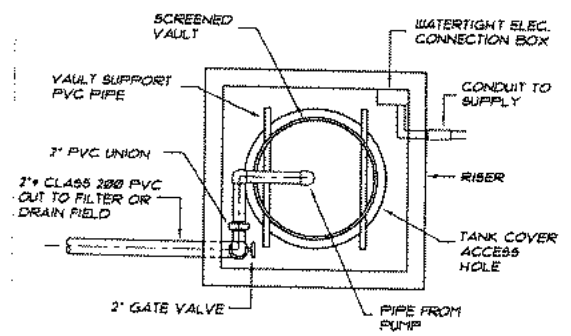
MICHAELS'
 PRECAST CONCRETE
 BORING, OREGON
 35175 S.E. HWY 211
 (503) 668-4073



COVER PLAN
3/4" = 1'-0"



RISER LID PLAN
3/4" = 1'-0"



PUMP APPARATUS PLAN
3/4" = 1'-0"

RECEIVED
 JAN 04 2002
 Water Quality Division
 Dept. of Environmental Quality

DATE	11/01/01
PROJECT	01-235
DRAWN	RW
CHECKED	
SHEET NUMBER	3