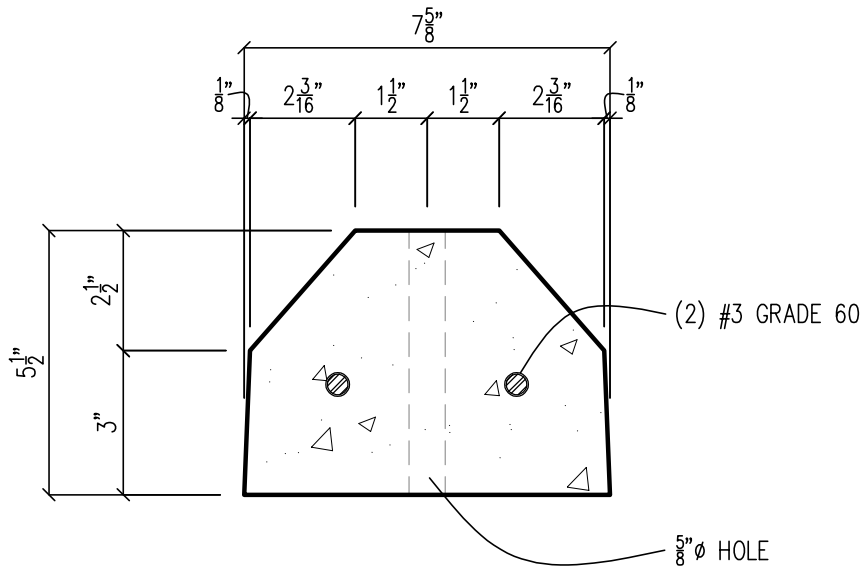


ELEVATION



SECTION

CONCRETE: 7 SACK GRAY W/ 3-6% AEA
 6000 PSI @ 28 DAYS
 FINISH: EXPOSED SURFACES STEEL FORM
 WEIGHT: 220 LBS EACH

Michaels
 PRECAST CONCRETE

35115 SE HWY 211
 BORING, OREGON 97009
 PHONE: 503-668-4073
 FAX: 503-668-7522
 WWW.MICHAELSPRECAST.COM

6' WHEEL STOP

DRAWN: 7/13/2021

REV: